



NATIONS HOUSE

103 Wigmore Street London W1

Second floor comprising 5,723 - 11,730 sq ft

NATIONS HOUSE



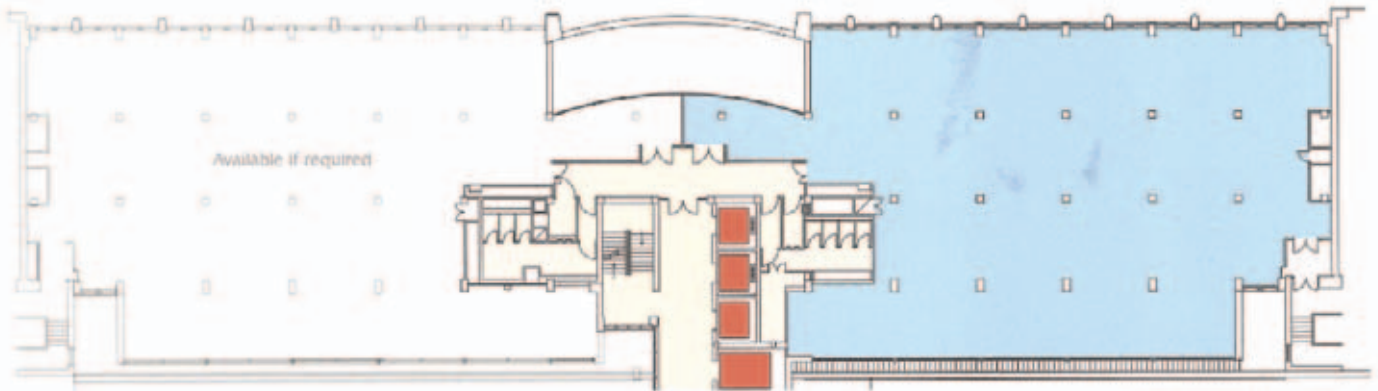
LOCATION

Nations House is prominently located on the south side of Wigmore Street, midway between Bond Street and Marble Arch, and close to Portman Square.

This location is exceptionally well served by the extensive retail facilities of Oxford Street and Bond Street as well as the café culture environs of James Street and St. Christopher's Place, where there is an eclectic selection of restaurants and bars.

Bond Street (Central and Jubilee lines), Marble Arch (Central line), Oxford Circus (Central, Bakerloo and Victoria lines) and Baker Street (Jubilee, Circle, Hammersmith and City, Bakerloo and Metropolitan lines) Underground Stations are all within walking distance and so provide excellent communications across Central London.





Plan for identification purposes only

ACCOMMODATION 2nd Floor – 5,723 - 11,730 sq ft

The building is designed to meet the tenants highest requirements and offers the following amenities.

- Four-piped fan coil air-conditioning
- Fully accessible metal tiled raised floor
- Four 16-person automatic passenger lifts (one with goods lift capacity)
- New metal tile suspended ceilings
- LG7 compatible integral lighting
- Impressive triple-height glass fronted reception
- 24-hour access and security
- Car parking available
- New male/female disabled w.c.'s
- New shower facilities



On the instructions of



NATIONS HOUSE



TERMS

Lease: A new lease for a term by arrangement.

Rent: Upon application.

For further information or to arrange an inspection please contact the agents:



22 Abchurch Lane, London, EC4A 3DF

Chris Thompson
Hugo Wilkie-Smith



22 Princes Street, London, W1B 2LX

Robert Young

HERMES REAL ESTATE follows RPI as 'Investment that recognises and addresses the environmental, social and economic risks and opportunities associated with the ownership and management of property assets'. This property has been rebranded recognising this policy.

Representation clause: The particulars contained in these details are believed to be correct, but cannot be guaranteed. All quality, in negligence or otherwise, for any loss arising from the use of these particulars is hereby excluded. Rents and prices quoted may be subject to VAT in addition. (10/09)



HERMES REAL ESTATE is a member of the Commercial Landlords Accreditation Scheme and has a right to follow the code of Leasing Business Practices in England and Wales 2007.

Paper used in the production of this brochure has been produced from sustainable sources and contains no chlorine.

DESIGNED AND PRODUCED BY DRAGLE ADVERTISING 020 7358 0835 | WWW.DRAGLEADVERTISING.CO.UK

